

Google

Earth

Federal Asset Management



APPLICATIONS

- Vehicle location and route history
- Emergency Services Monitoring
- Search and Rescue Data Management
- Defense and Intelligence
- Homeland security
- Public Safety
- Law enforcement
- State and Local Government

DESCRIPTION

The Trackstick Pro is an advanced GPS data logger capable of continuously recording its own location histories for extended periods of time. This device is powered by an included cigarette lighter plug or can be hard wired to any vehicle. The Trackstick Pro is a low cost solution to help manage government agency vehicles and assets. The Trackstick Pro can also serve as a vital tool when preparing for or even during a disaster.

When combined with the unrivaled mapping power of Google Earth, the Trackstick Pro is an effective solution for tracking moving assets including emergency, police, parking enforcement, street cleaning, utility and other city or federal vehicles.

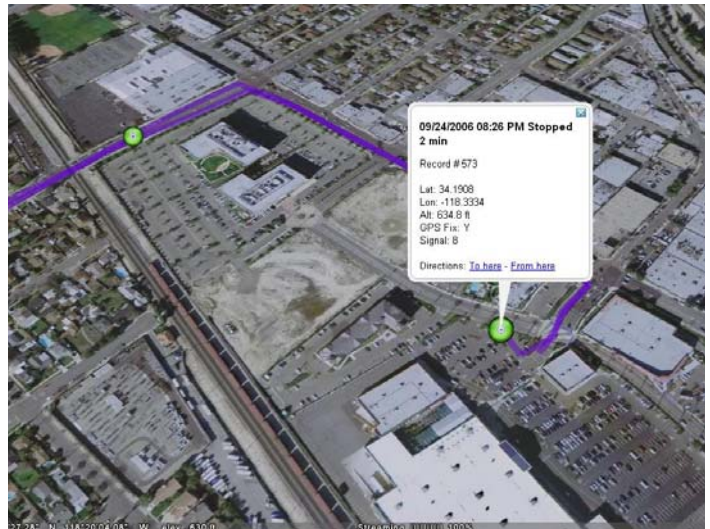
The Trackstick Pro can log weeks or even months of travel histories. User selectable features allow the record time to be changed from a recording interval of every 5 seconds or from 1 minute up to every 60 minutes. A “first in, first out” memory map will continuously record while erasing the oldest location histories first.

The Trackstick Pro records Date, Time, Location, Speed, Direction, Altitude, Signal Strength and Temperature. All information can be instantly “dumped” via the included USB cable and software. All mapping and reporting software is also included. No monthly fees are required and everything is included.

The Trackstick Pro can improve productivity, manage assets and be instrumental in a variety of disaster relief efforts including, property surveying, evacuation route planning and search and rescue.

FEATURES

- 2 1/2" X 2" X 3/4"
- Weatherproof case and detachable cradle.
- Firmware alarm notifies of any power interruptions.
- 4Mb flash memory records months of location histories.
- Runs on 5 – 24 volts DC with less than 6mA during normal operation.
- Built in temperature recorder
-10°C / +14°F to +60°C/140°F +/- 1°C
- Requires Windows XP or 2000 compatible computer with USB1.1/2.0 port for mapping and data retrieval.



For more information, contact Google Earth Federal or Telespial Systems at info@trackstick.com